



Georgia World Congress Center
PRINTING United Halls B, C and B/C Connector

FLOOR PLAN KEY

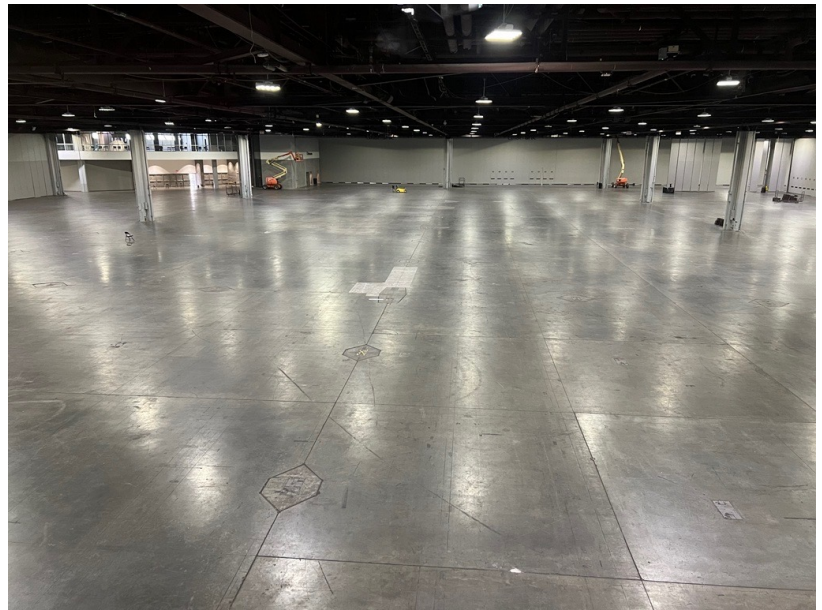
Note the exhibit hall is continuous space but we have broken down the following images to either B hall, C hall or B/C connector (center of the “U”). During move-in and move-out trucks drive directly through the Connector. The booths shaded in green will have limited set-up and tear-down time.

B HALL

Downtown hotel shuttles drop off on B-Hall Side and foot traffic from walkable downtown hotels

Registration on the B Hall Side will be located a couple levels up in Reg Hall



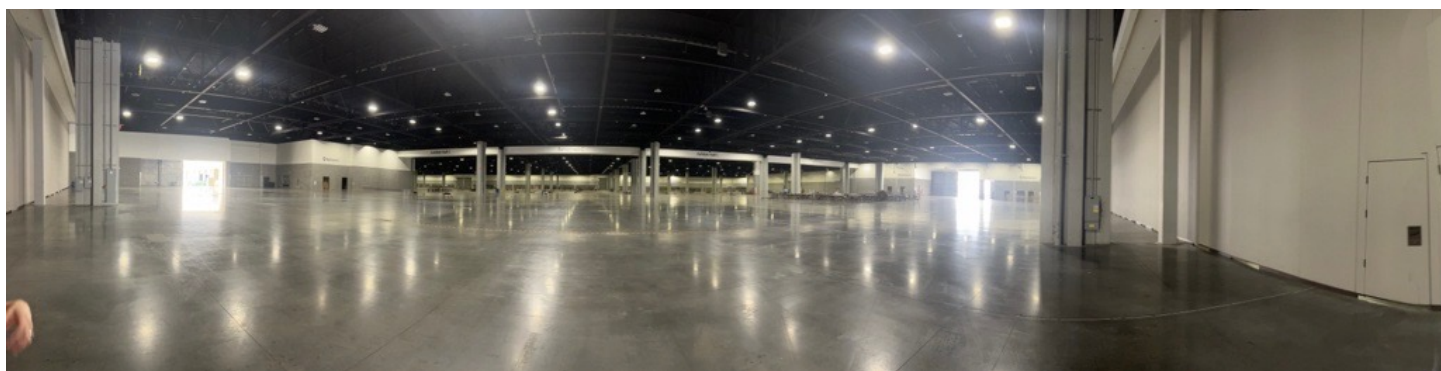


The floor plan shows a large exhibition hall with a grid of booths. The booths are color-coded: blue for the top section, yellow for the middle section, and purple for the bottom section. The layout is divided into several main areas by yellow lines. The top area contains booths for companies like Komori, Ricoh, Fujifilm, and HP. The middle area contains booths for companies like Canon, Agfa, and HP. The bottom area contains booths for companies like HP and HP. The plan also shows the locations of three entrances: ENTRANCE B1/B2/B3, ENTRANCE B3/B4, and ENTRANCE B4/B5.

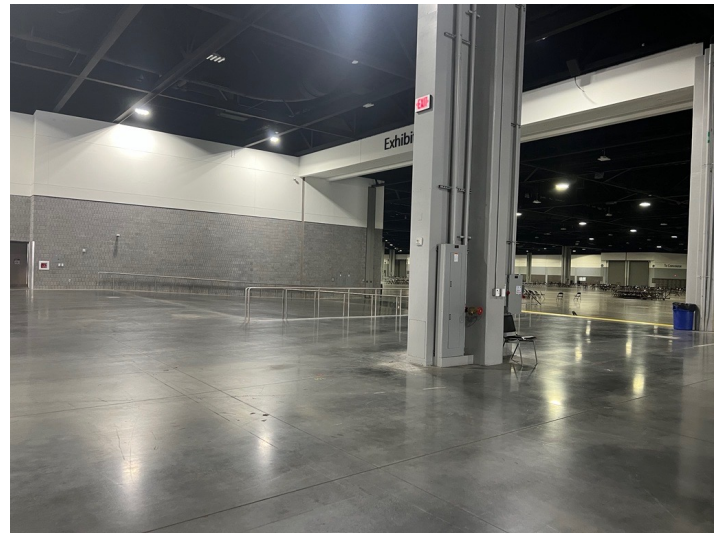


B/C CONNECTOR

The connection between B and C halls to make this continuous exhibit space

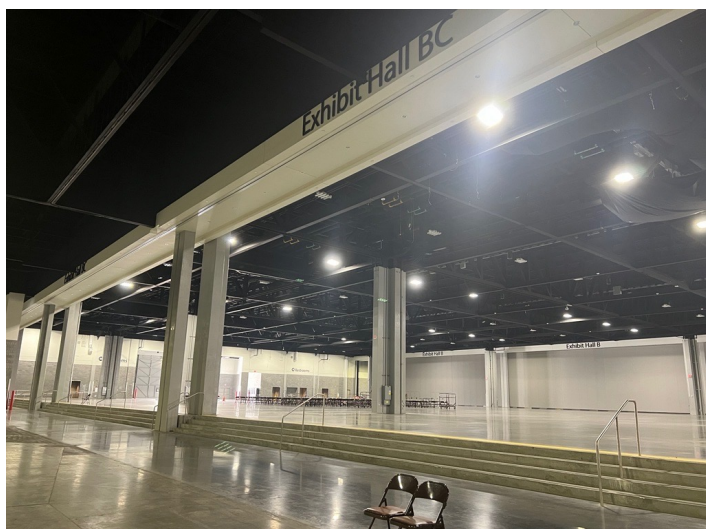
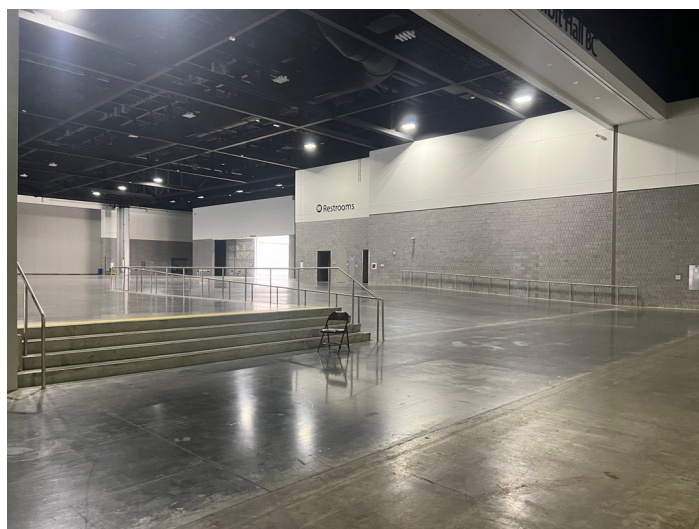
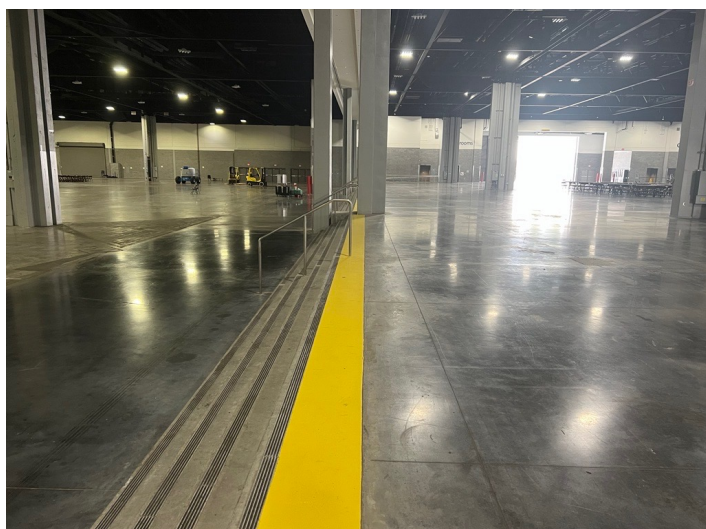


The floor plan shows a large exhibition hall with various booths and rooms. The booths are labeled with numbers and names, such as B11113 Colex Finishing, Inc., B16105 PRINTING United Alliance Café, and B16095 PRINTING United Alliance Café. The plan also shows the location of the Fluid Power Exposition and Conference, which is highlighted in red. The plan includes a legend for booth types: Blue for Fluid Power Exposition and Conference, Purple for Fluid Power Exposition and Conference, and Red for Fluid Power Exposition and Conference. The plan also shows the location of the Fluid Power Exposition and Conference, which is highlighted in red.



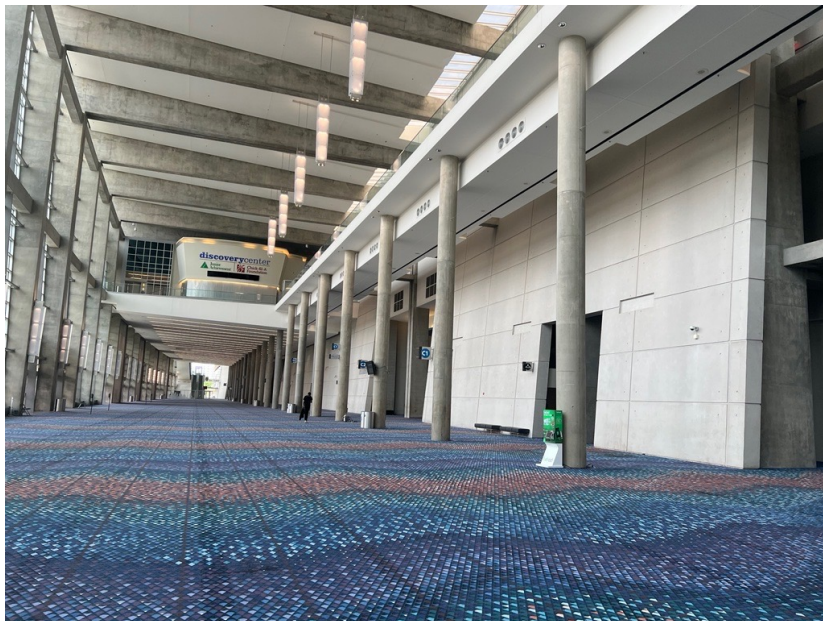
The floor plan illustrates the layout of the 2011 International Fluid Power Exposition & Conference. Key areas include:

- Exhibition Booths:**
 - B11113:** Coltex Finishing, Inc.
 - B16105:** PRINTING United Alliance Café
 - B16095:** PRINTING United Alliance Café
 - B13071:** Roland DGA Corporation
 - B10073:** PRINTING United Alliance Member Lounge
 - B10079:** Digital Colloids Corp.
 - B10077:** Hydraulic Research
 - B10075:** Hydraulic Research
 - B10073:** Hydraulic Research
 - B10071:** Hydraulic Research
 - B10069:** Hydraulic Research
 - B10067:** Hydraulic Research
 - B10065:** Hydraulic Research
 - B10063:** Hydraulic Research
 - B10061:** Hydraulic Research
 - B10059:** Hydraulic Research
 - B10057:** Hydraulic Research
 - B10055:** Hydraulic Research
 - B10053:** Hydraulic Research
 - B10051:** Hydraulic Research
 - B10049:** Hydraulic Research
 - B10047:** Hydraulic Research
 - B10045:** Hydraulic Research
 - B10043:** Hydraulic Research
 - B10041:** Hydraulic Research
 - B10039:** Hydraulic Research
 - B10037:** Hydraulic Research
 - B10035:** Hydraulic Research
 - B10033:** Hydraulic Research
 - B10031:** Hydraulic Research
 - B10029:** Hydraulic Research
 - B10027:** Hydraulic Research
 - B10025:** Hydraulic Research
 - B10023:** Hydraulic Research
 - B10021:** Hydraulic Research
 - B10019:** Hydraulic Research
 - B10017:** Hydraulic Research
 - B10015:** Hydraulic Research
 - B10013:** Hydraulic Research
 - B10011:** Hydraulic Research
 - B10009:** Hydraulic Research
 - B10007:** Hydraulic Research
 - B10005:** Hydraulic Research
 - B10003:** Hydraulic Research
 - B10001:** Hydraulic Research
- Other Areas:**
 - B16105:** PRINTING United Alliance Café
 - B16095:** PRINTING United Alliance Café
 - B13071:** Roland DGA Corporation
 - B10073:** PRINTING United Alliance Member Lounge
 - B10079:** Digital Colloids Corp.
 - B10077:** Hydraulic Research
 - B10075:** Hydraulic Research
 - B10073:** Hydraulic Research
 - B10071:** Hydraulic Research
 - B10069:** Hydraulic Research
 - B10067:** Hydraulic Research
 - B10065:** Hydraulic Research
 - B10063:** Hydraulic Research
 - B10061:** Hydraulic Research
 - B10059:** Hydraulic Research
 - B10057:** Hydraulic Research
 - B10055:** Hydraulic Research
 - B10053:** Hydraulic Research
 - B10051:** Hydraulic Research
 - B10049:** Hydraulic Research
 - B10047:** Hydraulic Research
 - B10045:** Hydraulic Research
 - B10043:** Hydraulic Research
 - B10041:** Hydraulic Research
 - B10039:** Hydraulic Research
 - B10037:** Hydraulic Research
 - B10035:** Hydraulic Research
 - B10033:** Hydraulic Research
 - B10031:** Hydraulic Research
 - B10029:** Hydraulic Research
 - B10027:** Hydraulic Research
 - B10025:** Hydraulic Research
 - B10023:** Hydraulic Research
 - B10021:** Hydraulic Research
 - B10019:** Hydraulic Research
 - B10017:** Hydraulic Research
 - B10015:** Hydraulic Research
 - B10013:** Hydraulic Research
 - B10011:** Hydraulic Research
 - B10009:** Hydraulic Research
 - B10007:** Hydraulic Research
 - B10005:** Hydraulic Research
 - B10003:** Hydraulic Research
 - B10001:** Hydraulic Research

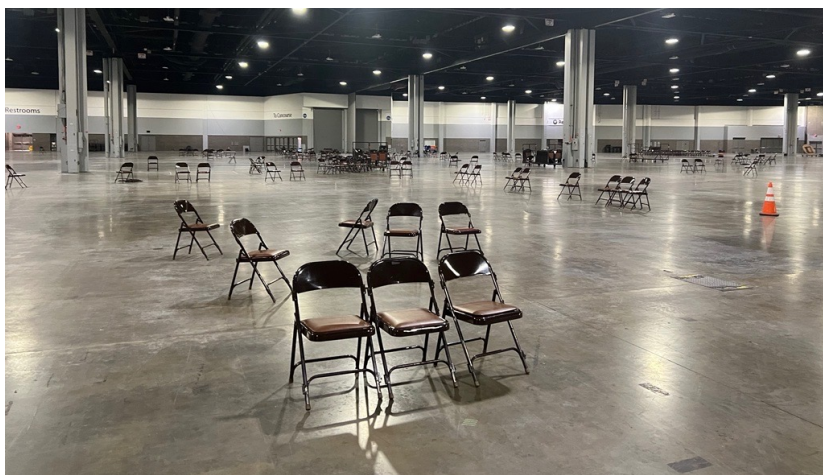
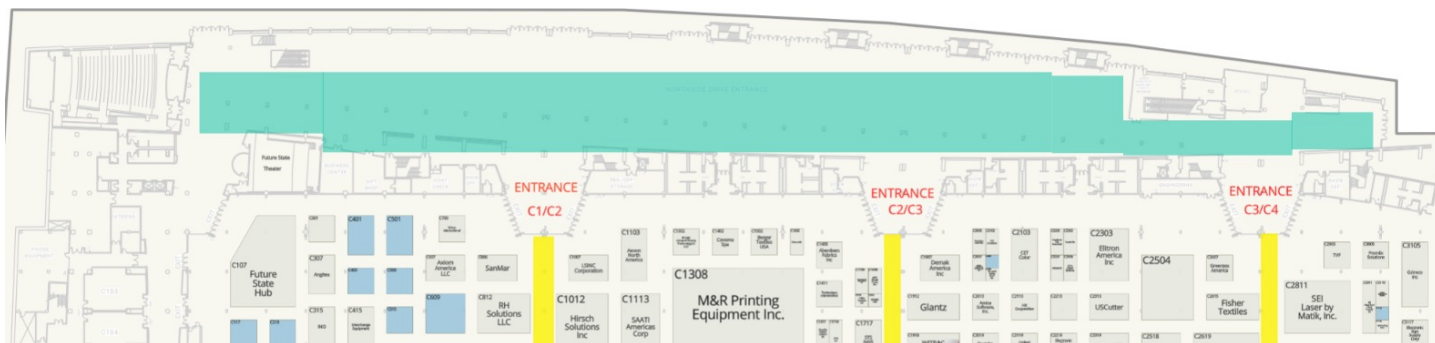


C HALL

Lobby (where one registration will be located, mid-town shuttles drop on C-Hall Side) –



Lobby highlighted in teal; entrances marked with main aisles in yellow

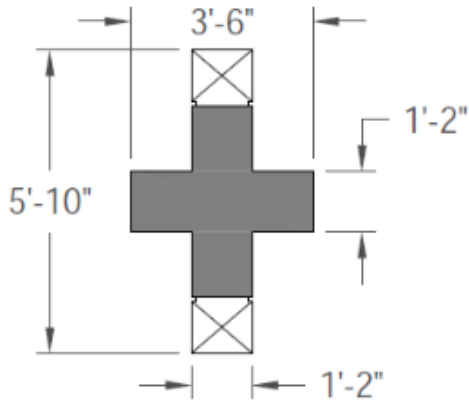


C Hall columns highlighted in purple, main aisles in yellow, entrance roll up doors to hall in red

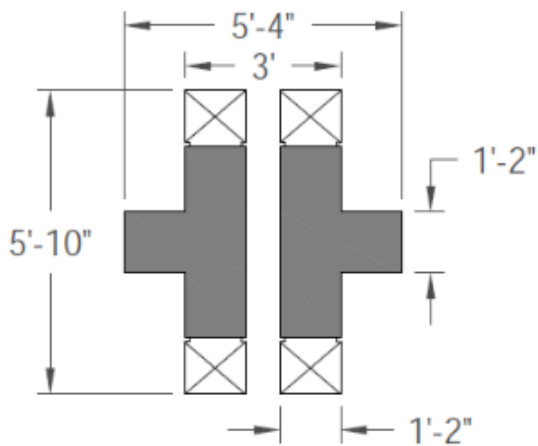


COLUMN SPECS

Building B

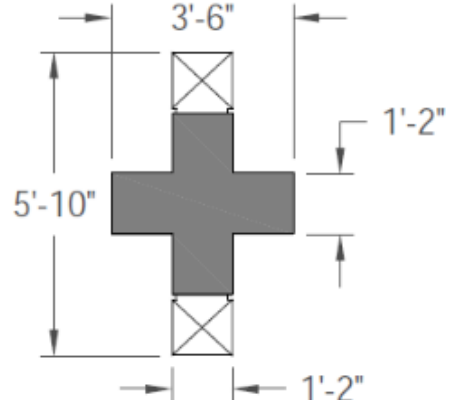


Single Column

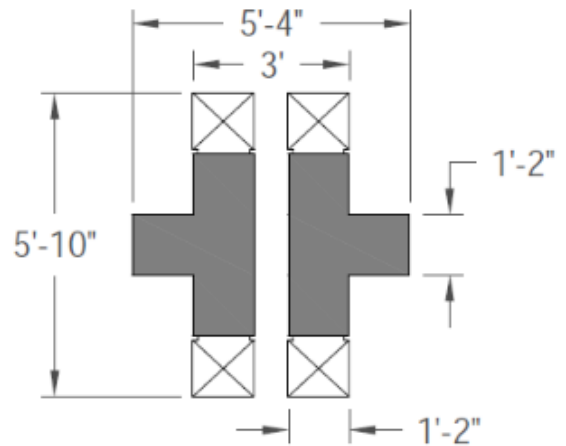


Double Column (@ Airwalls)

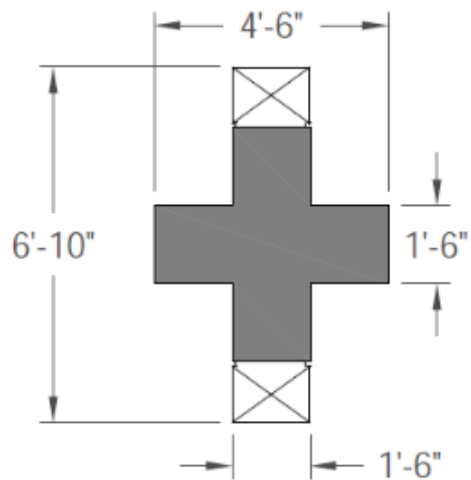
Building C



Single Column



Double Column (@ Airwalls)



Enhanced Column (First Column Line C-1)